

## VI. Kapitel

Rhythmische Übung:  (einschl. Überbinden)

1) 2) 3) 4) 5) 6) 7) 8) 9) 10) 11) 12) 13) 14) =y.. 15) 16) 17) 18) 19) 20) 21) 22) 23) 24)

# VI-A (25-48)

25) 26) 27)

28) 29)

30) 31) 32)

33) 34)

35) 36)

37) 38) 39)

40) 41) 42)

43) 44) 45)

46) 47)

48)

# VI-B (1-16)

## Tonartfixierung auf Grund des Stimmgabel-a

1) a = 1 in A-Dur      2) a = 2 in G-Dur

3) a = 3 in F-Dur      4) a = 4 in E Dur

5) a = 5 in D-Dur      6) a = 6 in C-Dur

7) a = 7 in B-Dur      8) a = 1 in a-Moll

9) a = 2 in g-Moll      10) a = 3 in fis-Moll

11) a = 4 in e-Moll      12) a = 5 in d-Moll

13) a = 6 in cis-Moll      14) a = 6 in mel. c-Moll

15) a = 7 in h-Moll      16) a = 7 in harm. und mel. b Moll

# VI-C (1-2)

## Übungen auf Grundlage der Kadenz in Dur und Moll

### Vorübungen

1a)      1b)      1c)

2a)      2b)      2c)

3a) 3b) 3c)

## Nur Harmonietöne

5)

6)

7)

8)

## Einbeziehung harmoniefremder Töne

9)

10)

11)

Übungen zu harmonischem und melodischem Dur, zu Pentatonik, Kirchentönen, Zigeunertönen und zu zigeunertonartig beeinflussten Skalen

## Vorübung

1a) reines Dur

b) harm. Dur



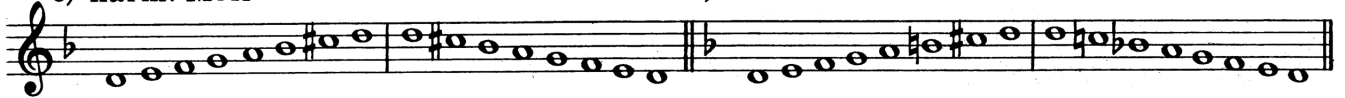
c) mel. Dur

d) reines Moll



e) harm. Moll

f) mel. Moll



g) Pentatonik

h) Dorisch



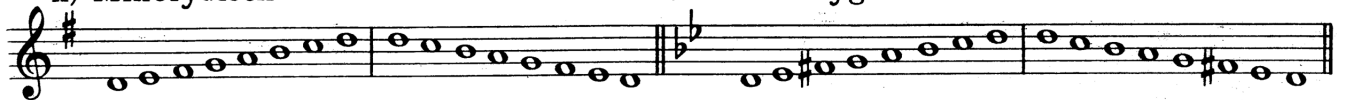
i) Phrygisch

j) Lydisch



k) Mixolydisch

l) Dur - Phrygisch



m) Moll-Lydisch

n) Zigeuner-Moll



o) Zigeuner-Dur



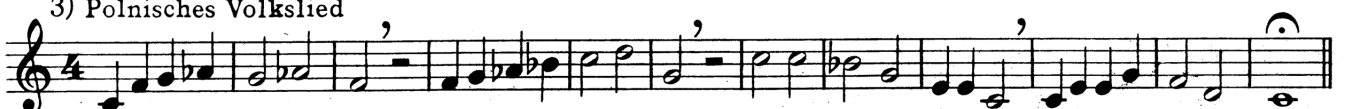
## Harmonisches Dur

2) Kroatisches Volkslied



## Melodisches Dur

3) Polnisches Volkslied



# VI-D (4-14)

## Pentatonik

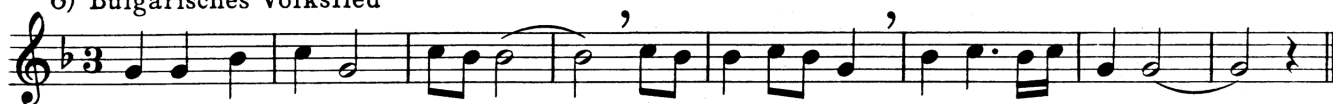
4) Ungarisches Volkslied-



5) Ungarisches Volkslied



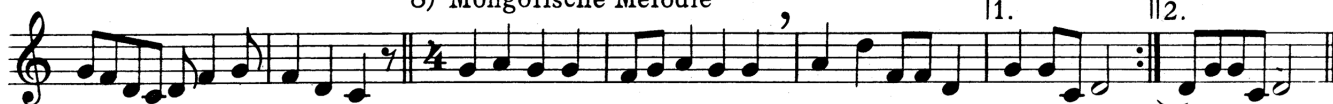
6) Bulgarisches Volkslied



7) Englisches Volkslied



8) Mongolische Melodie



9) Mongolische Melodie



10) Mongolische Melodie



11) Mongolische Melodie



12) Sartische Weise



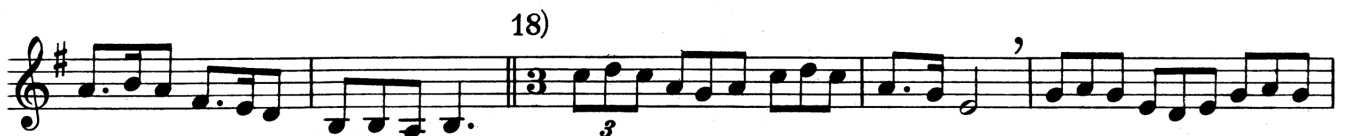
13) Wotjakisches Volkslied



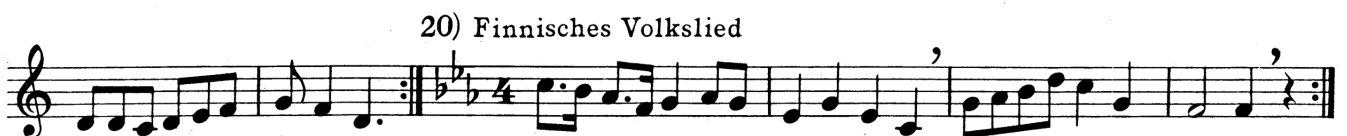
14)



# VI-D (15-23)



Dorisch



# VI-D (24-34)

24) Litauisches Volkslied



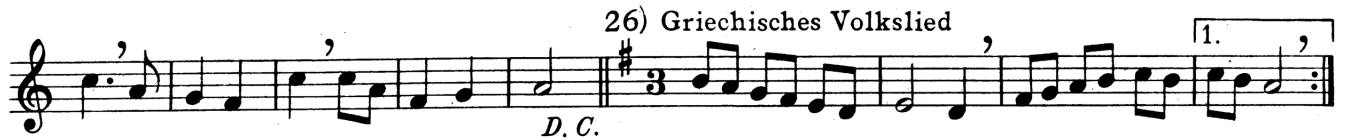
Musical notation for 24) Litauisches Volkslied. Treble clef, key signature of two flats (B-flat, E-flat), 2/4 time signature. The melody consists of eighth and quarter notes with various accents and a first ending bracket.

25) Baskisches Volkslied



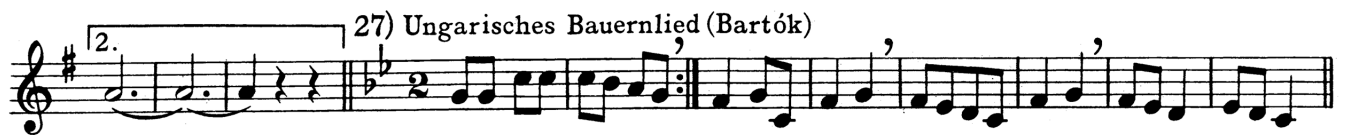
Musical notation for 25) Baskisches Volkslied. Treble clef, key signature of two flats, 2/4 time signature. Features a second ending bracket and a fermata over the final note.

26) Griechisches Volkslied



Musical notation for 26) Griechisches Volkslied. Treble clef, key signature of one sharp (F#), 3/4 time signature. Includes the instruction "D. C." and a first ending bracket.

27) Ungarisches Bauernlied (Bartók)



Musical notation for 27) Ungarisches Bauernlied (Bartók). Treble clef, key signature of one sharp, 2/4 time signature. Includes a second ending bracket.

28) Ungarisches Bauernlied (Bartók)



Musical notation for 28) Ungarisches Bauernlied (Bartók). Treble clef, 2/4 time signature. Features a rhythmic pattern of eighth notes.

29)



Musical notation for 29). Treble clef, key signature of two sharps (F#, C#), 4/4 time signature. The melody is composed of eighth and quarter notes.

30)



Musical notation for 30). Treble clef, key signature of two sharps, 3/4 time signature. Includes a triplet of eighth notes.



Musical notation for 30) continuation. Treble clef, key signature of two sharps, 3/4 time signature. Continues the melody from the previous block.

31)



Musical notation for 31). Treble clef, key signature of two flats, 6/8 time signature. The melody features eighth and quarter notes.

## Phrygisch

32) Makedonisches Volkslied



Musical notation for 32) Makedonisches Volkslied. Treble clef, key signature of one sharp, 4/4 time signature. Includes a fermata over the final note.

33) Sorbisches Volkslied



Musical notation for 33) Sorbisches Volkslied. Treble clef, key signature of two flats, 4/4 time signature.

34) Russisches Volkslied



Musical notation for 34) Russisches Volkslied. Treble clef, key signature of one sharp, 3/8 time signature. Includes a fermata over the final note.



# VI-D (35-45)

35) Norwegisches Volkslied

Musical notation for piece 35, consisting of three staves of music in 4/4 time with a key signature of three flats. The first staff contains measures 1-8, the second staff contains measures 9-16, and the third staff contains measures 17-24. The piece concludes with a double bar line.

Lydisch

38) Norwegisches Volkslied

Musical notation for piece 38, consisting of five staves of music. The first staff is in 2/4 time with a key signature of two flats. The second staff is in 3/4 time with a key signature of two sharps. The third staff is in 4/4 time with a key signature of two sharps. The fourth staff is in 7/8 time with a key signature of two sharps. The fifth staff is in 3/4 time with a key signature of two flats. The piece concludes with a double bar line.

Mixolydisch

42) Russisches Volkslied

Musical notation for piece 42, consisting of one staff of music in 6/8 time with a key signature of one sharp. The piece concludes with a double bar line.

43) Russisches Volkslied

Musical notation for piece 43, consisting of one staff of music in 4/4 time with a key signature of two sharps. The piece concludes with a double bar line.

44) Norwegisches Volkslied

Musical notation for piece 44, consisting of one staff of music with a first and second ending. The first ending is in 3/4 time with a key signature of two sharps, and the second ending is in 3/4 time with a key signature of three flats. The piece concludes with a double bar line.

45) Slowakisches Volkslied

Musical notation for piece 45, consisting of one staff of music in 2/4 time with a key signature of one sharp. The piece concludes with a double bar line.

46) Kroatisches Volkslied

Musical notation for 46) Kroatisches Volkslied, featuring a treble clef, a key signature of one sharp (F#), and a 2/4 time signature. The melody consists of eighth and quarter notes with various ornaments. A chord symbol (C) is indicated at the end of the piece.

47) Estnisches Volkslied

Musical notation for 47) Estnisches Volkslied, featuring a treble clef, a key signature of two flats (Bb, Eb), and a 2/4 time signature. The melody consists of eighth and quarter notes with various ornaments. A chord symbol (C) is indicated at the end of the piece.

48) Finnisches Volkslied

Musical notation for 48) Finnisches Volkslied, featuring a treble clef, a key signature of two flats (Bb, Eb), and a 2/4 time signature. The melody consists of eighth and quarter notes with various ornaments.

Continuation of the musical notation for 48) Finnisches Volkslied, featuring a treble clef, a key signature of two flats (Bb, Eb), and a 2/4 time signature. The melody consists of eighth and quarter notes with various ornaments.

Continuation of the musical notation for 48) Finnisches Volkslied, featuring a treble clef, a key signature of two flats (Bb, Eb), and a 2/4 time signature. The melody consists of eighth and quarter notes with various ornaments.

49)

Musical notation for 49), featuring a treble clef, a key signature of three sharps (F#, C#, G#), and a 3/4 time signature. The melody consists of eighth and quarter notes with various ornaments.

50)

Musical notation for 50), featuring a treble clef, a key signature of two flats (Bb, Eb), and a 3/4 time signature. The melody consists of eighth and quarter notes with various ornaments.

51) Finnisches Volkslied

Musical notation for 51) Finnisches Volkslied, featuring a treble clef, a key signature of three flats (Bbb, Ebb, Ab), and a 2/4 time signature. The melody consists of eighth and quarter notes with various ornaments. The piece is divided into two sections: (Aeolisch) and (Mixolydisch).

Durphrygisch

52) Kroatisches Volkslied

Musical notation for 52) Kroatisches Volkslied, featuring a treble clef, a key signature of two flats (Bb, Eb), and a 2/4 time signature. The melody consists of eighth and quarter notes with various ornaments. The piece is divided into two sections: (F) and (Fis).

53) Kroatisches Volkslied

Musical notation for 53) Kroatisches Volkslied, featuring a treble clef, a key signature of two flats (Bb, Eb), and a 3/4 time signature. The melody consists of eighth and quarter notes with various ornaments. The piece includes first and second endings, marked with '1.' and '2.'. A chord symbol (G) is indicated at the end.

54) Bulgarisches Volkslied

Musical notation for 54) Bulgarisches Volkslied, featuring a treble clef, a key signature of two sharps (F#, C#), and a 4/4 time signature. The melody consists of eighth and quarter notes with various ornaments. The piece includes first and second endings, marked with '1.' and '2.'. A chord symbol (Fis) is indicated at the end.

55) Serbisches Volkslied

Musical notation for 55) Serbisches Volkslied, featuring a treble clef, a key signature of two flats (Bb, Eb), and a 2/4 time signature. The melody consists of eighth and quarter notes with various ornaments.

Zigeuner - Moll

56)

Musical notation for 56) Zigeuner - Moll, featuring a treble clef, a key signature of two flats (Bb, Eb), and a 3/4 time signature. The melody consists of eighth and quarter notes with various ornaments.

# VI-D (57-64)

57)

58)

59)

## Zigeuner-Dur

60) Griechisches Volkslied

(C)

61)

62)

## Zigeunertonartlich beeinflusst

63) Ungarisches Volkslied

64) Ungarisches Volkslied

# VI-D (65-75)

65) Ungarisches Volkslied



Musical notation for 65) Ungarisches Volkslied, featuring a treble clef, a key signature of one sharp (F#), and a 2/4 time signature. The melody consists of eighth and quarter notes with various accents.

66) Ungarisches Volkslied



Musical notation for 66) Ungarisches Volkslied, featuring a treble clef, a key signature of one sharp (F#), and a 2/4 time signature. The melody includes a repeat sign with first and second endings.

67) Ungarisches Volkslied



Musical notation for 67) Ungarisches Volkslied, featuring a treble clef, a key signature of two flats (Bb, Eb), and a 4/4 time signature. The melody includes a repeat sign with first and second endings.

68) Slowakisches Volkslied



Musical notation for 68) Slowakisches Volkslied, featuring a treble clef, a key signature of two sharps (F#, C#), and a 4/4 time signature. The melody includes a repeat sign with first and second endings.

69) Slowakisches Volkslied



Musical notation for 69) Slowakisches Volkslied, featuring a treble clef, a key signature of two flats (Bb, Eb), and a 2/4 time signature. The melody includes a repeat sign with first and second endings.

70) Slowakisches Volkslied



Musical notation for 70) Slowakisches Volkslied, featuring a treble clef, a key signature of two sharps (F#, C#), and a 2/4 time signature. The melody includes a repeat sign with first and second endings.

71) Slowakisches Volkslied



Musical notation for 71) Slowakisches Volkslied, featuring a treble clef, a key signature of two flats (Bb, Eb), and a 2/4 time signature. The melody includes a repeat sign with first and second endings.

72) Slowakisches Volkslied



Musical notation for 72) Slowakisches Volkslied, featuring a treble clef, a key signature of two flats (Bb, Eb), and a 2/4 time signature. The melody includes a repeat sign with first and second endings.

73) Katalanisches Volkslied



Musical notation for 73) Katalanisches Volkslied, featuring a treble clef, a key signature of two sharps (F#, C#), and a 3/4 time signature. The melody includes a repeat sign with first and second endings.

74) Volkslied auf Mallorca



Musical notation for 74) Volkslied auf Mallorca, featuring a treble clef, a key signature of two sharps (F#, C#), and a 3/4 time signature. The melody includes a repeat sign with first and second endings. A note is marked with a fermata and the label "(Fis)".

75) Tschechisches Volkslied



Musical notation for 75) Tschechisches Volkslied, featuring a treble clef, a key signature of two flats (Bb, Eb), and a 6/8 time signature. The melody includes a repeat sign with first and second endings.

75) Tschechisches Volkslied



Musical notation for 75) Tschechisches Volkslied, featuring a treble clef, a key signature of two flats (Bb, Eb), and a 6/8 time signature. The melody includes a repeat sign with first and second endings. A note is marked with a fermata and the label "(E)".

76) Polnisches Volkslied



Musical notation for 76) Polnisches Volkslied. It consists of two staves. The first staff is in G major and 6/8 time, featuring a melody with eighth and sixteenth notes. It includes a first ending (1.) and a second ending (2.).

77) Serbisches Volkslied



Musical notation for 77) Serbisches Volkslied. It consists of two staves. The first staff is in G major and 6/8 time. The second staff is in G major and 4/4 time, continuing the melody.

78) Kroatisches Volkslied



Musical notation for 78) Kroatisches Volkslied. It consists of two staves. The first staff is in G major and 4/4 time. The second staff is in G major and 4/4 time, with a note marked "(Ois)".



Musical notation for 78) Kroatisches Volkslied (continued). It consists of one staff in G major and 4/4 time, featuring a triplet of eighth notes.

79) Rumänisches Volkslied



Musical notation for 79) Rumänisches Volkslied. It consists of two staves. The first staff is in G major and 4/4 time. The second staff is in G major and 4/4 time, featuring a triplet of eighth notes.

80) Rumänisches Volkslied



Musical notation for 80) Rumänisches Volkslied. It consists of two staves. The first staff is in G major and 2/4 time. The second staff is in G major and 2/4 time.



Musical notation for 80) Rumänisches Volkslied (continued). It consists of one staff in G major and 2/4 time.

81) Rumänisches Volkslied



Musical notation for 81) Rumänisches Volkslied. It consists of two staves. The first staff is in G major and 2/4 time. The second staff is in G major and 2/4 time.



Musical notation for 81) Rumänisches Volkslied (continued). It consists of one staff in G major and 2/4 time.

82) Rumänisches Volkslied



Musical notation for 82) Rumänisches Volkslied. It consists of two staves. The first staff is in G major and 3/8 time. The second staff is in G major and 3/8 time.



Musical notation for 82) Rumänisches Volkslied (continued). It consists of one staff in G major and 3/8 time.



Musical notation for 82) Rumänisches Volkslied (continued). It consists of one staff in G major and 3/8 time.